
TED Documentation

Release 0.0.1

Thahmina Ali

Apr 08, 2018

Contents:

1	Where to find TED	3
1.1	Pre-requisites	3
2	How to run TED	5
2.1	Setting up Data Inputs	5
3	TED Virtual Machine (VM)	7
3.1	Pre-requisites	7
3.2	Setting up TED VM Application	7
3.2.1	Download TED VM files from Galaxy Data Libraries	7
3.2.2	Select Appliance on VM	8
3.2.3	Import OVA Appliance on VM	9
3.2.4	TED Appliance settings for import on VM	10
3.2.5	TED Appliance Importing on VM	11
3.3	TED Appliance Settings on VM	12
3.3.1	Go to Settings	12
3.3.2	System Requirements	12
3.3.3	Network	13
3.3.4	Shared Folders	15
3.4	Connecting TED Appliance on VM	17
3.4.1	Go to Settings	17
3.4.2	Broad casted Galaxy instance IP address	18
3.4.3	Web Browser connection of Galaxy instance on VM	18
3.5	How to access TED toolkit on VM	19
3.6	TED VM Troubleshoot	19
3.6.1	Galaxy instance IP address unreachable	19
3.6.2	Reinitialize TED appliance	20
3.6.3	Reconnect Galaxy instance IP address on web browser	20
4	License	21
5	Contact	23

A comprehensive approach for convenient transcriptomic profiling as a clinically-oriented application.

TED toolkit Manual-

Our Galaxy Page: <http://galaxy.hunter.cuny.edu/u/bioitcore/p/transcriptomics-profiler-for-easy-discovery-ted-toolkit> includes all instructions and sources in accessing and using the TED toolkit in full details, as well as the following content below.

CHAPTER 1

Where to find TED

1.1 Pre-requisites

CHAPTER 2

How to run TED

2.1 Setting up Data Inputs

TED Virtual Machine (VM)

How to run the TED toolkit Virtual Machine (VM) Application

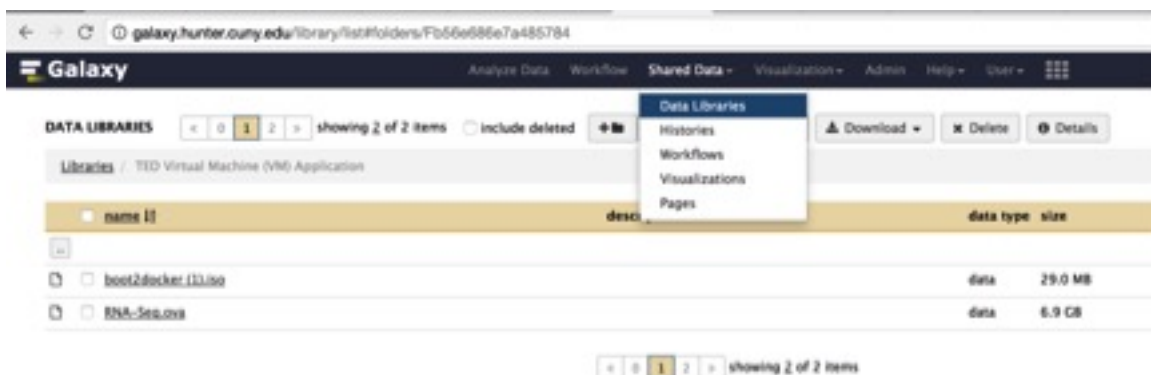
3.1 Pre-requisites

Download VirtualBox: <http://www.virtualbox>

3.2 Setting up TED VM Application

3.2.1 Download TED VM files from Galaxy Data Libraries

Galaxy Data Libraries link: <http://galaxy.hunter.cuny.edu/library/list#folders/Fb56e686e7a485784>

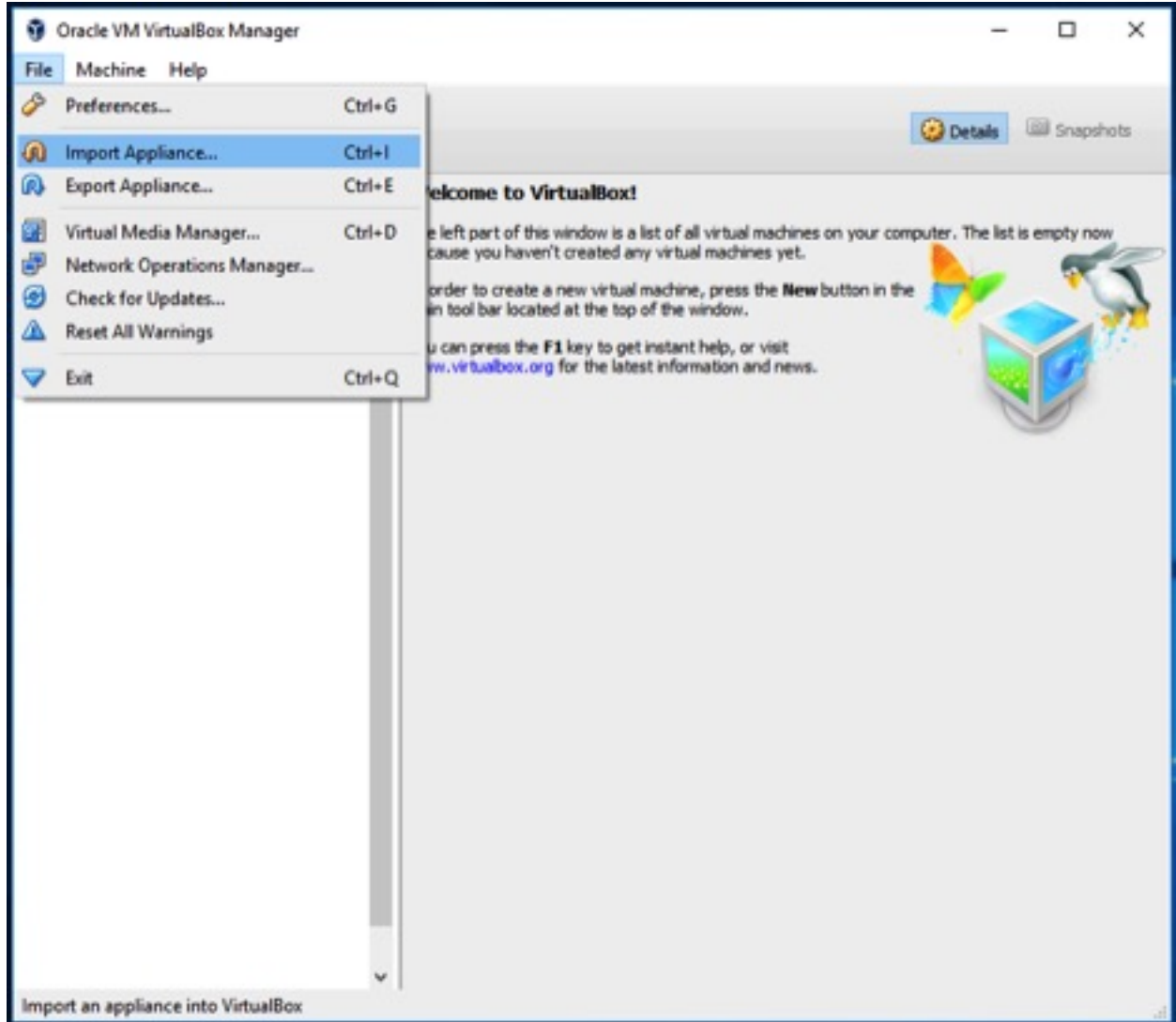


The screenshot shows the Galaxy Data Libraries interface. The browser address bar displays the URL: galaxy.hunter.cuny.edu/library/list#folders/Fb56e686e7a485784. The page title is "Galaxy". The navigation menu includes "Analyze Data", "Workflow", "Shared Data", "Visualization", "Admin", "Help", and "User". The main content area is titled "DATA LIBRARIES" and shows a list of items. The breadcrumb path is "Libraries / TED Virtual Machine (VM) Application". A dropdown menu is open over the "Data Libraries" header, showing options: "Histories", "Workflows", "Visualizations", and "Pages". The table below lists the files:

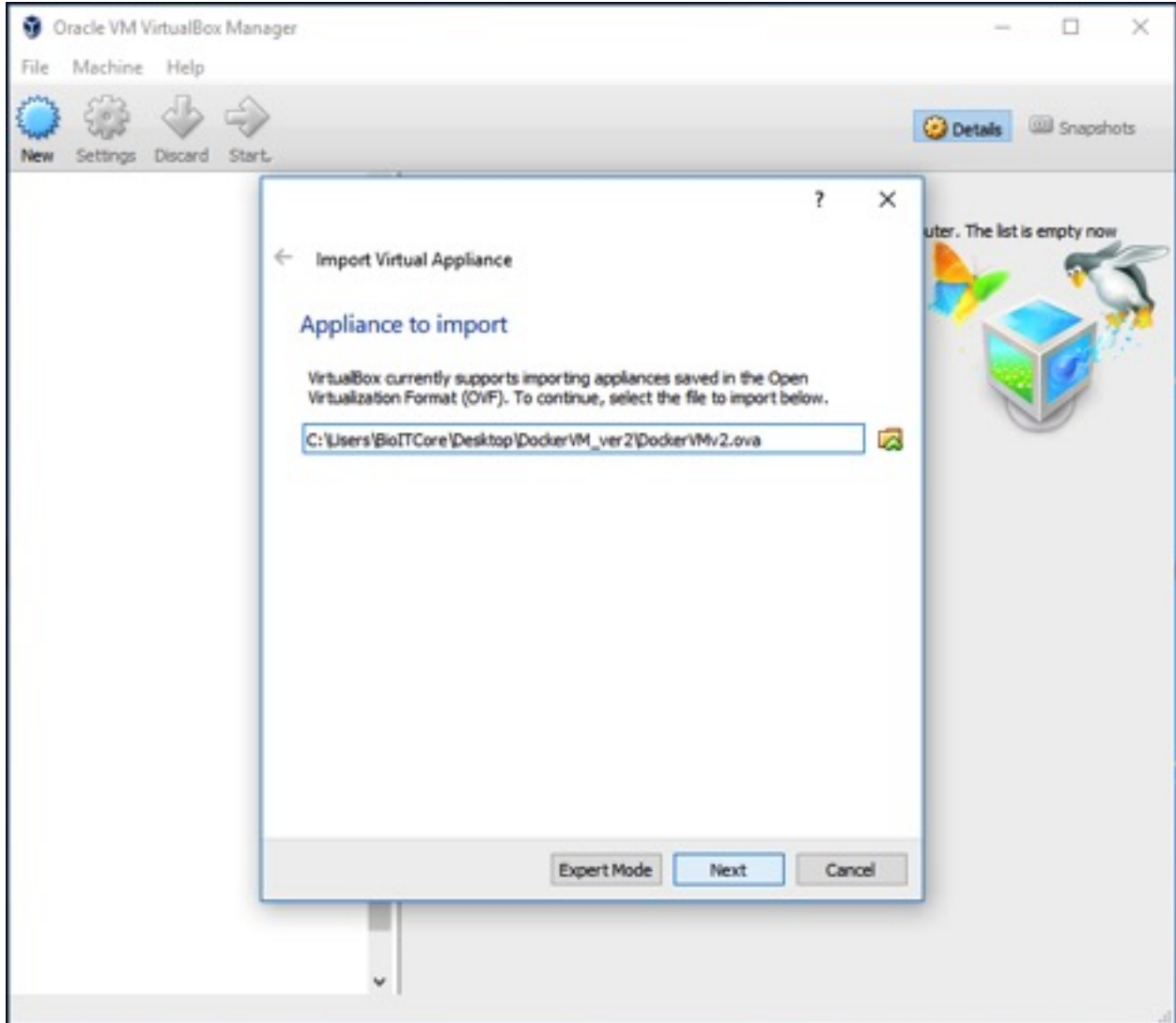
name	description	data type	size
<input type="checkbox"/> boot2docker.10.10.0		data	29.0 MB
<input type="checkbox"/> RNA-Seq.ovs		data	6.9 GB

At the bottom of the table, there is a pagination control showing "showing 2 of 2 items".

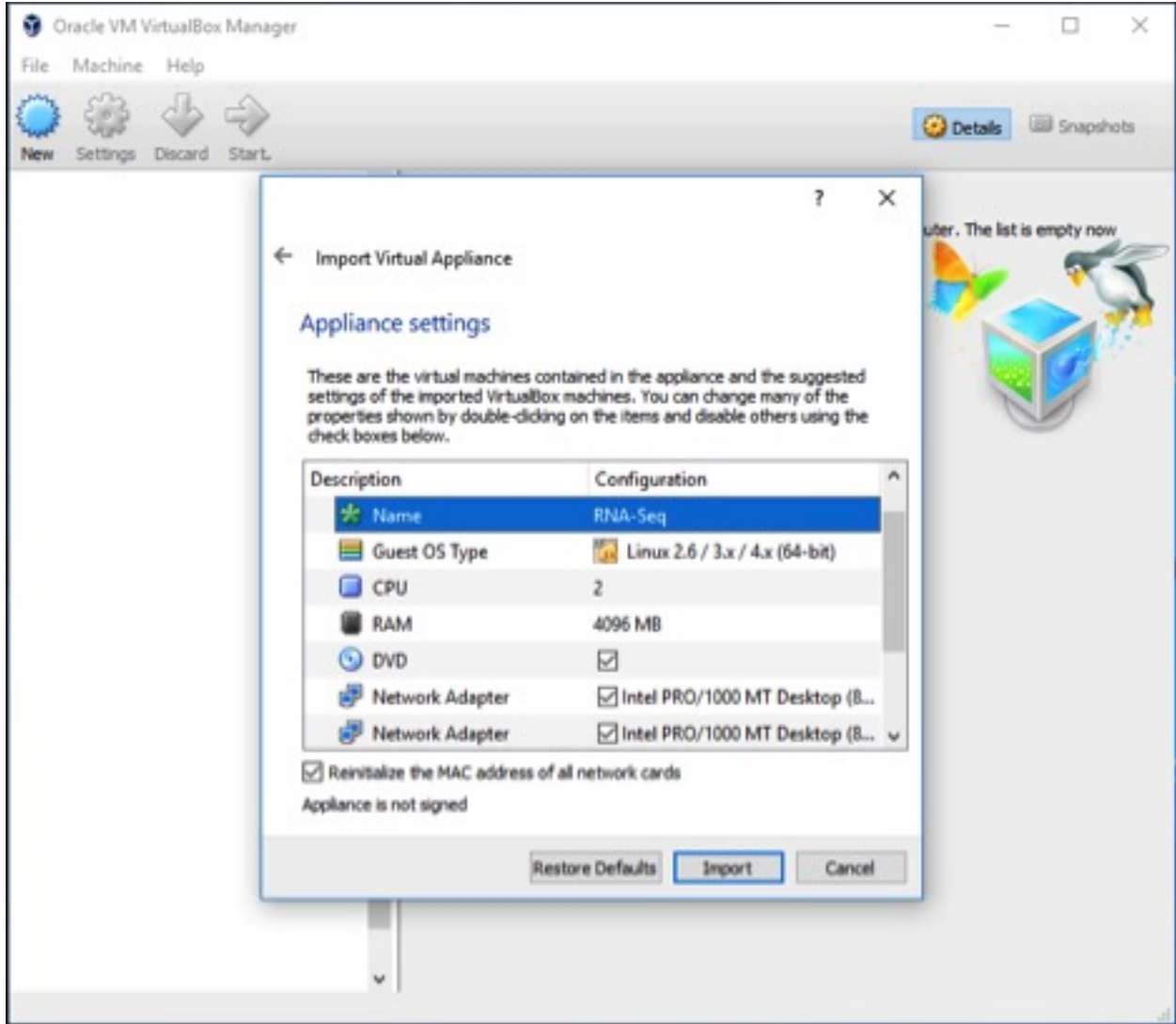
3.2.2 Select Appliance on VM



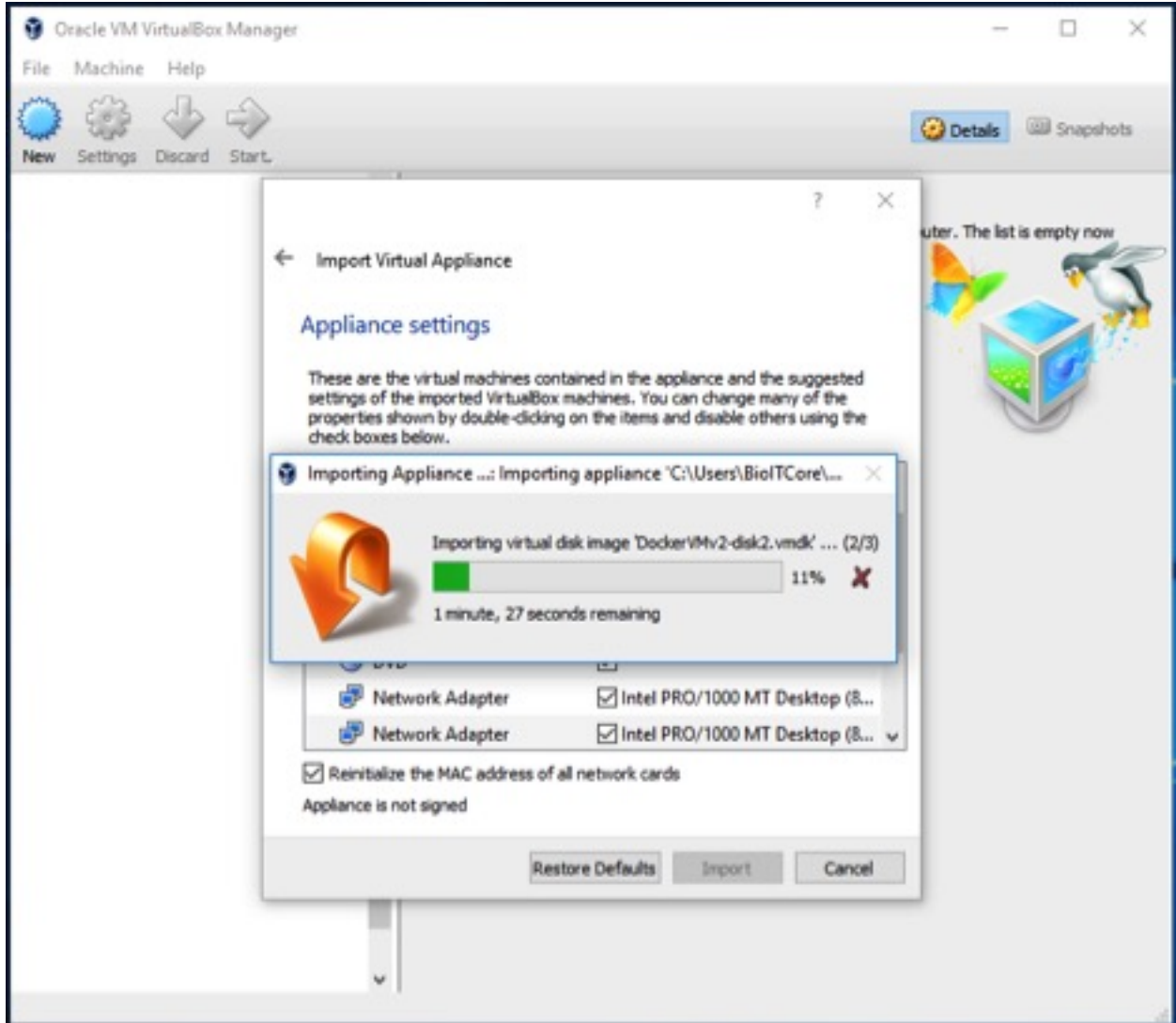
3.2.3 Import OVA Appliance on VM



3.2.4 TED Appliance settings for import on VM

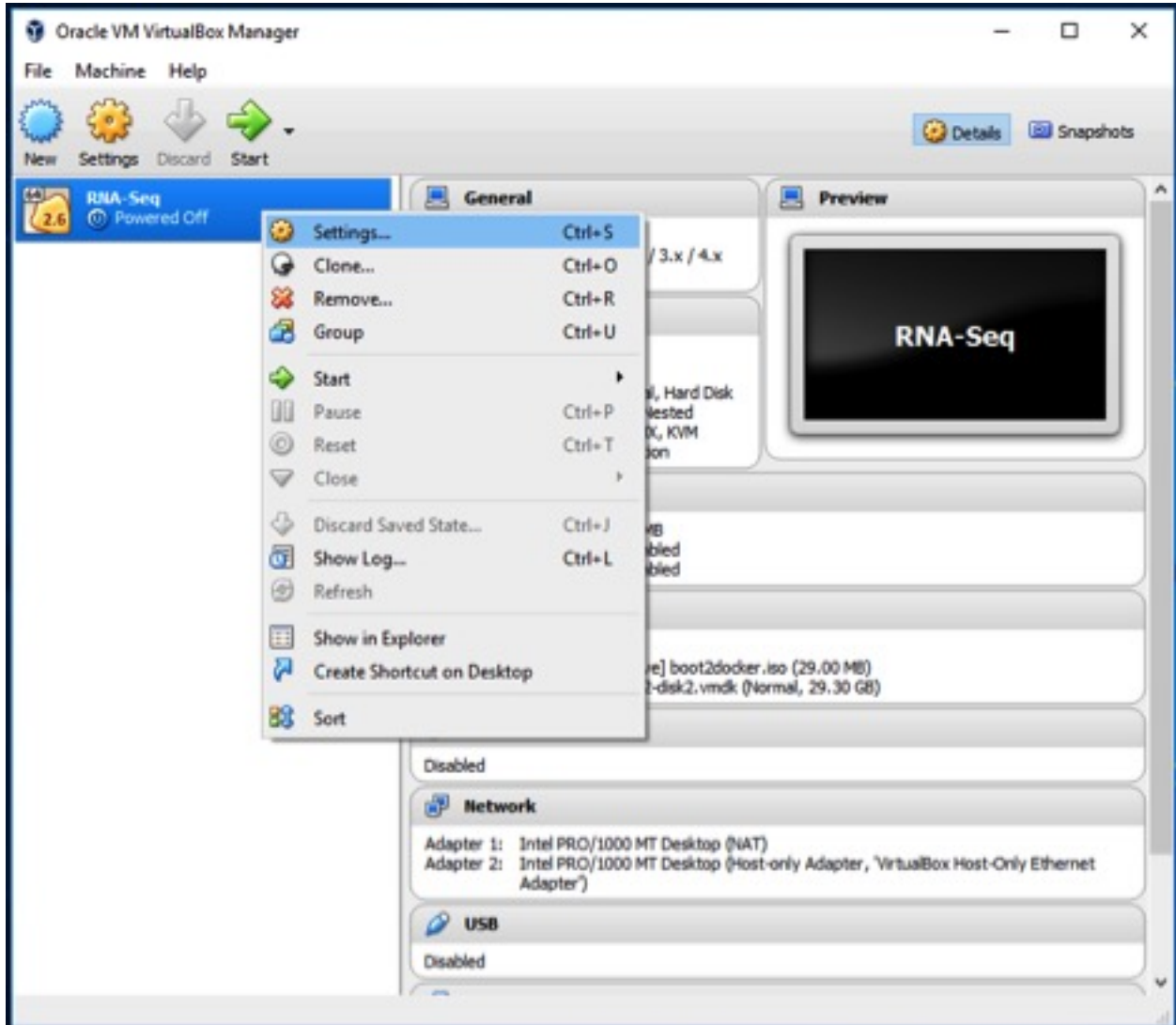


3.2.5 TED Appliance Importing on VM



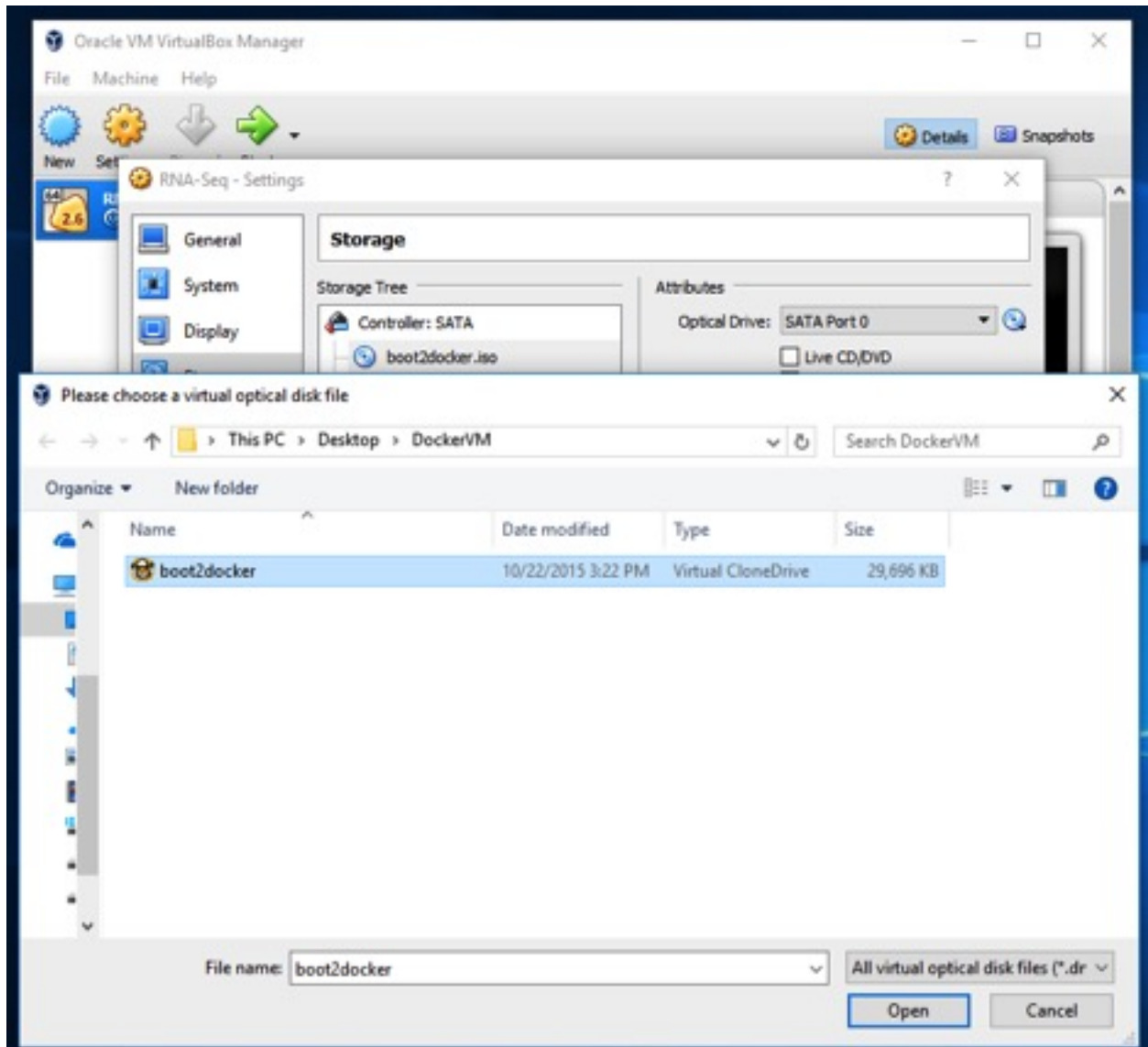
3.3 TED Appliance Settings on VM

3.3.1 Go to Settings



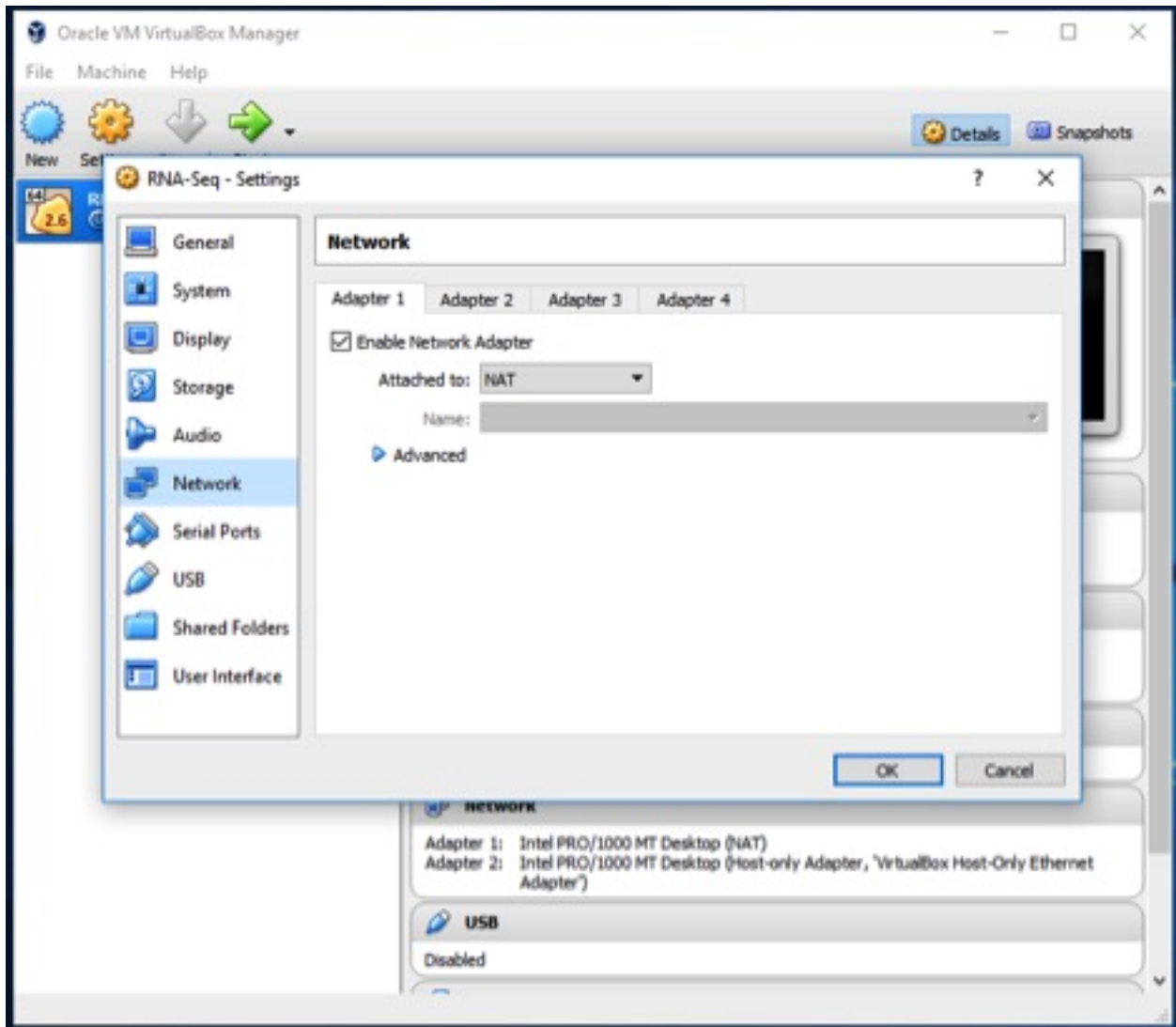
3.3.2 System Requirements

Open virtual disk file for TED Appliance on VM

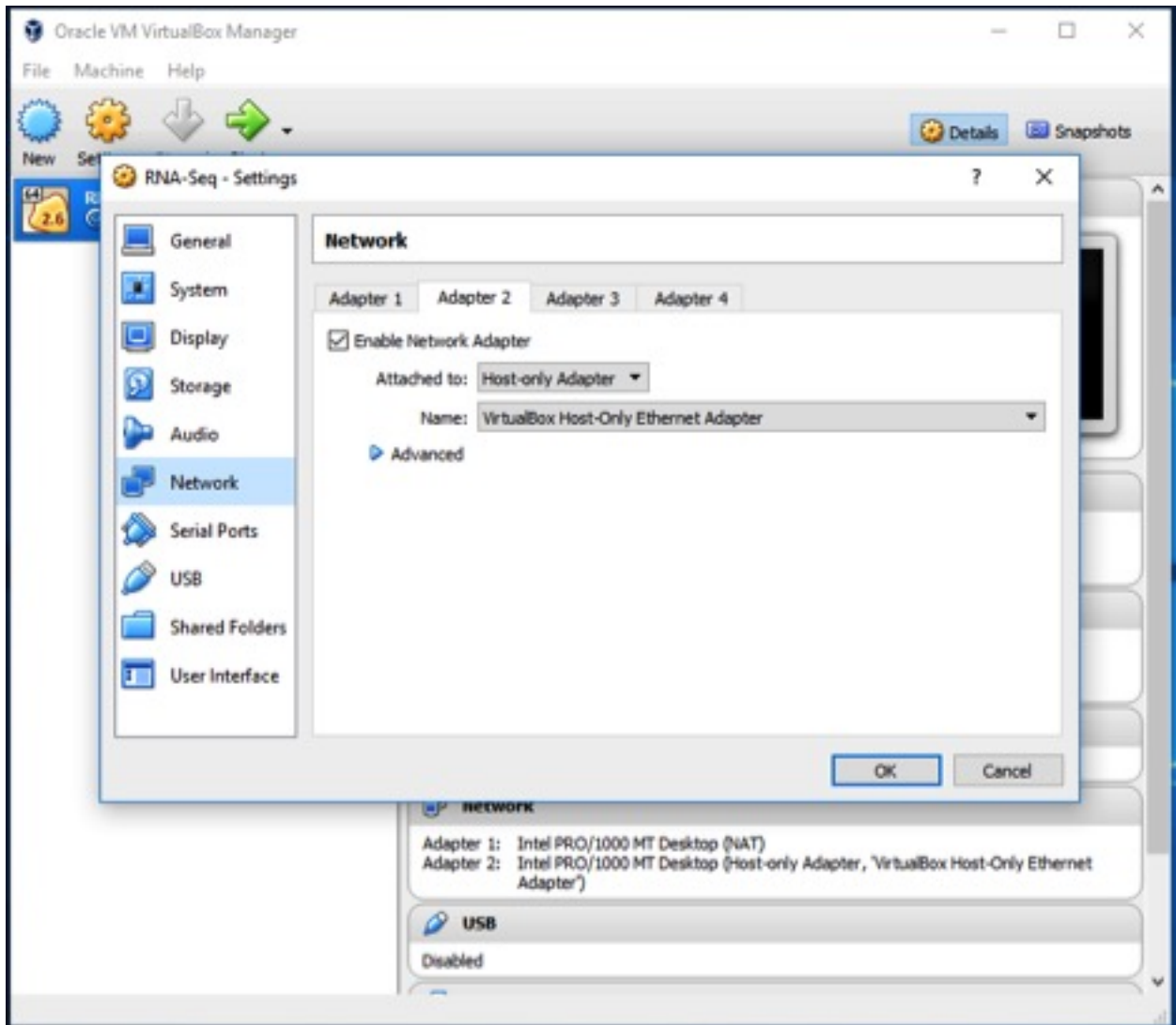


3.3.3 Network

Setup Adapter 1

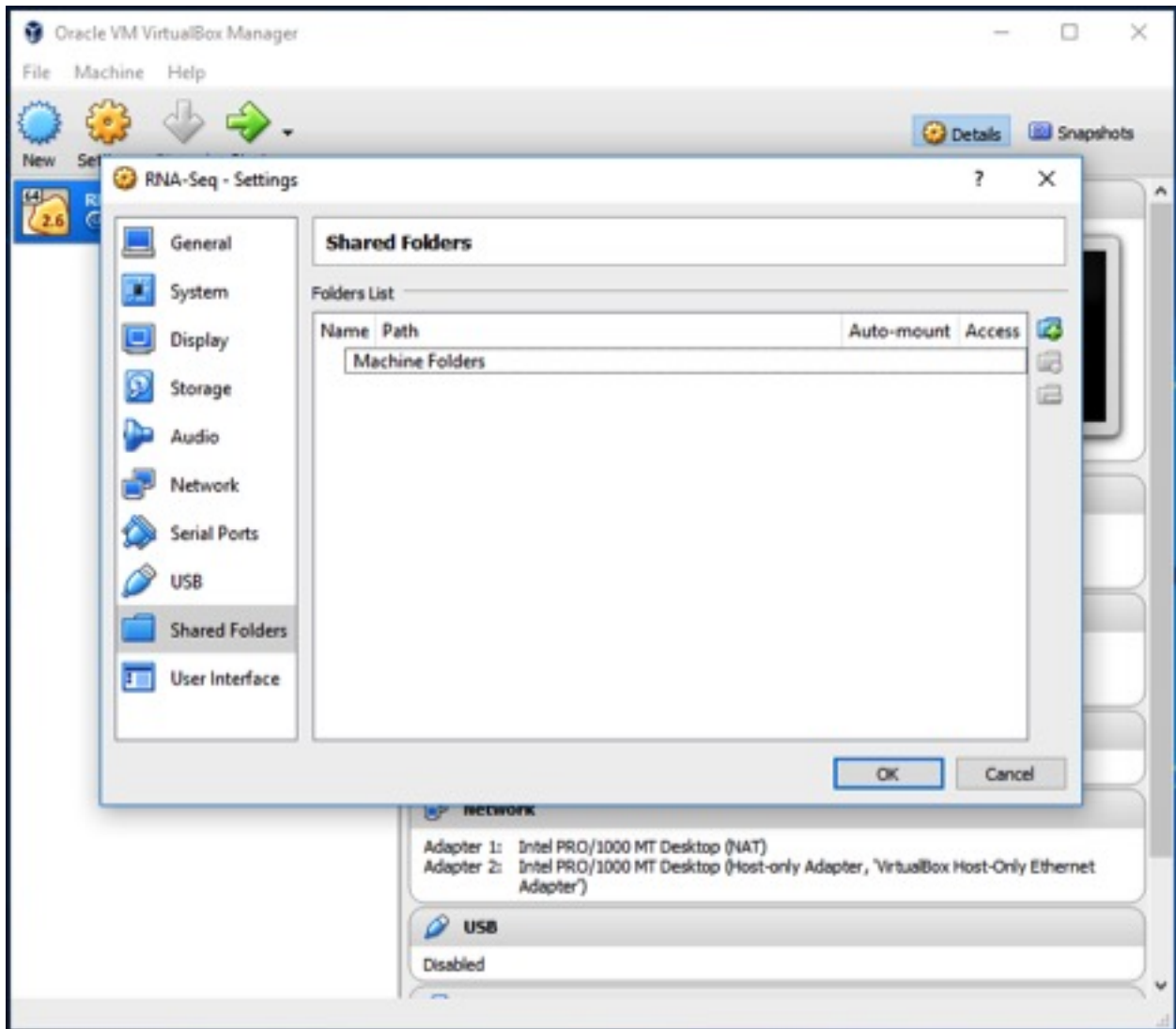


Setup Adapter 2



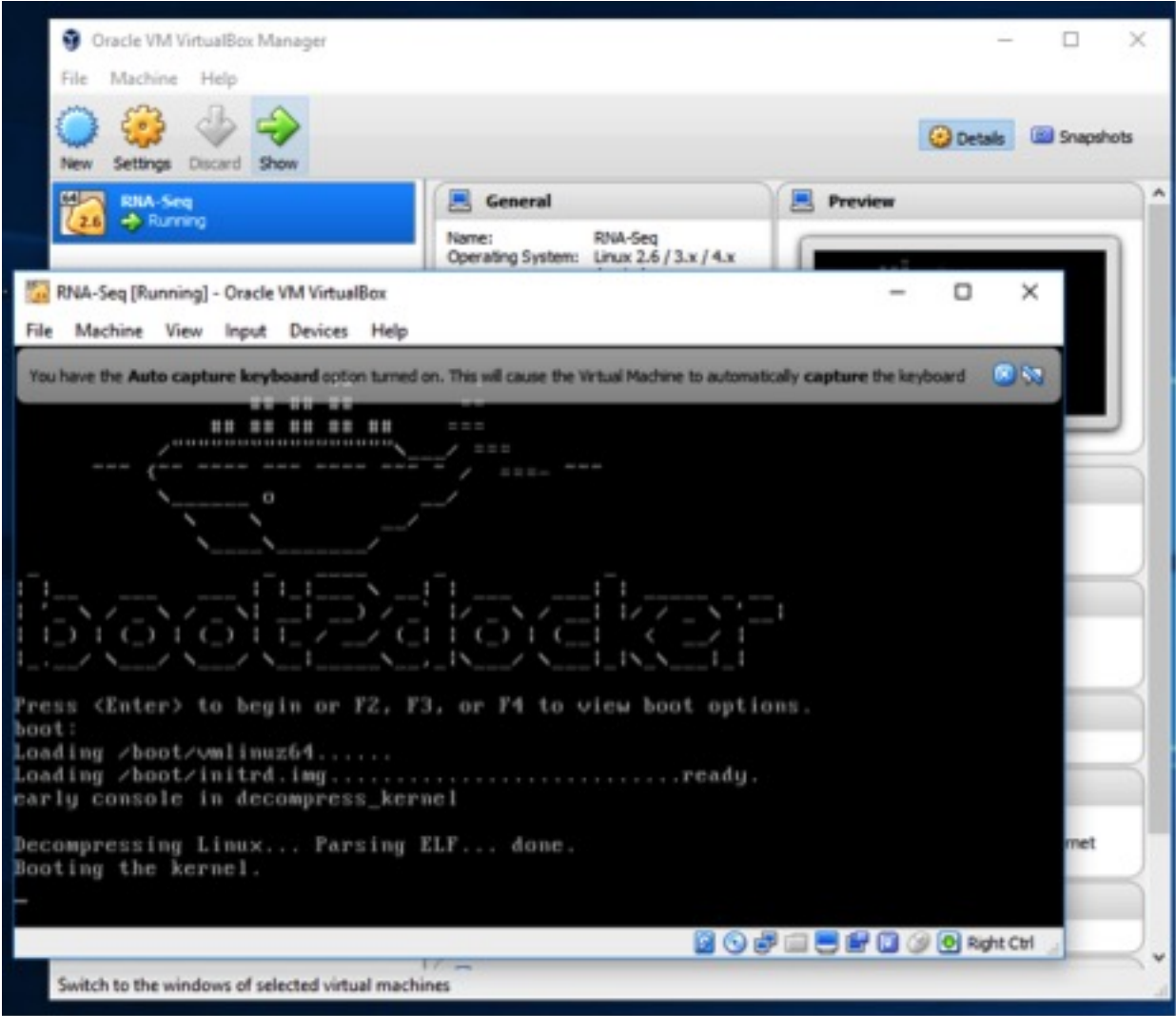
3.3.4 Shared Folders

Setup Adapter 1

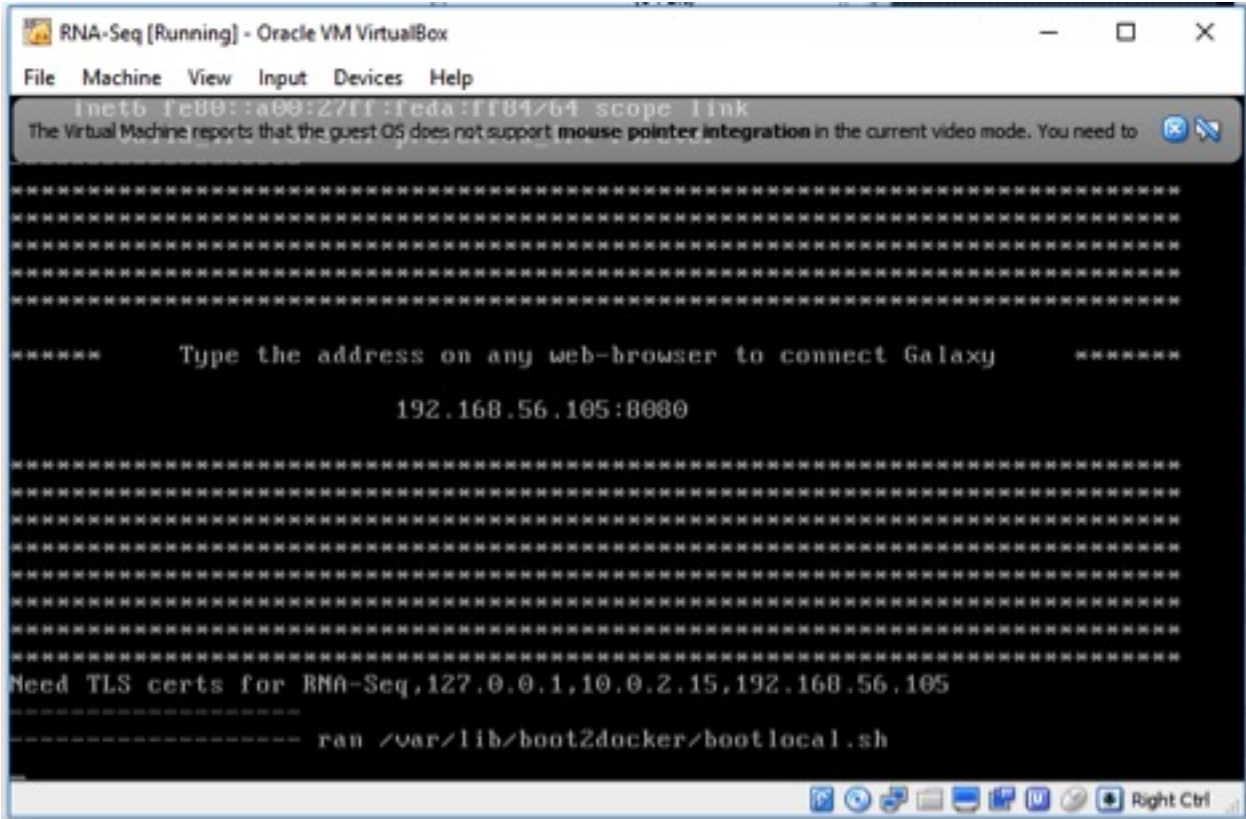


3.4 Connecting TED Appliance on VM

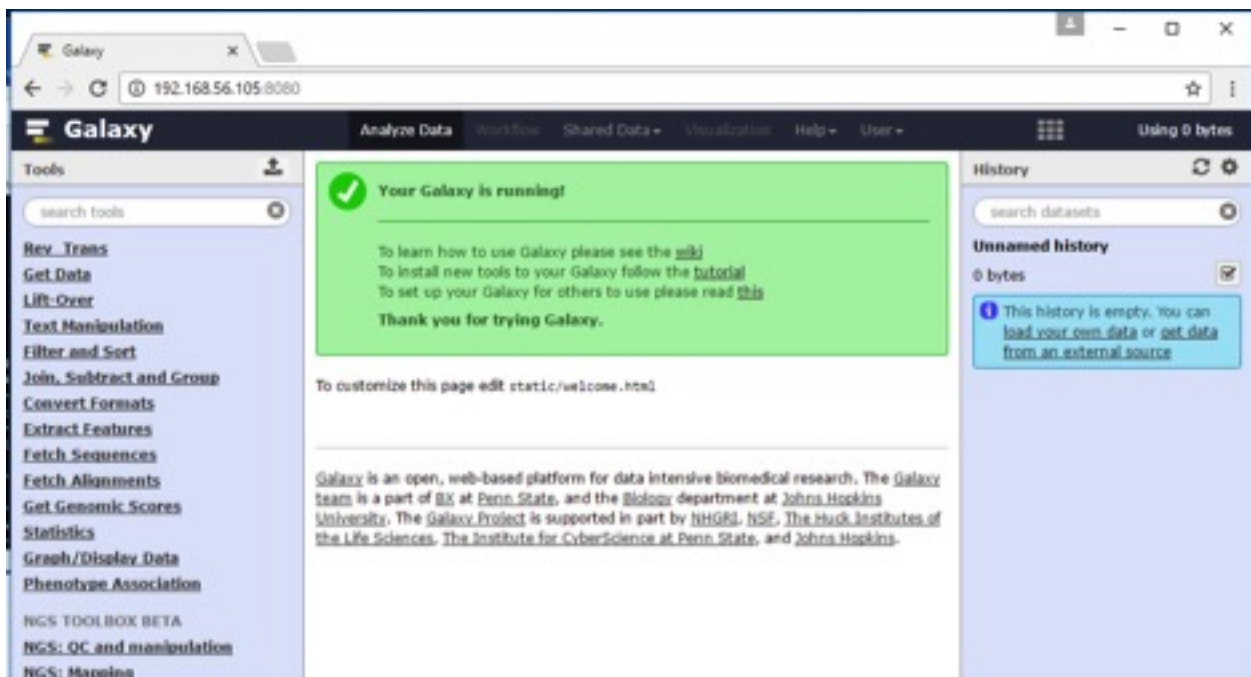
3.4.1 Go to Settings



3.4.2 Broad casted Galaxy instance IP address



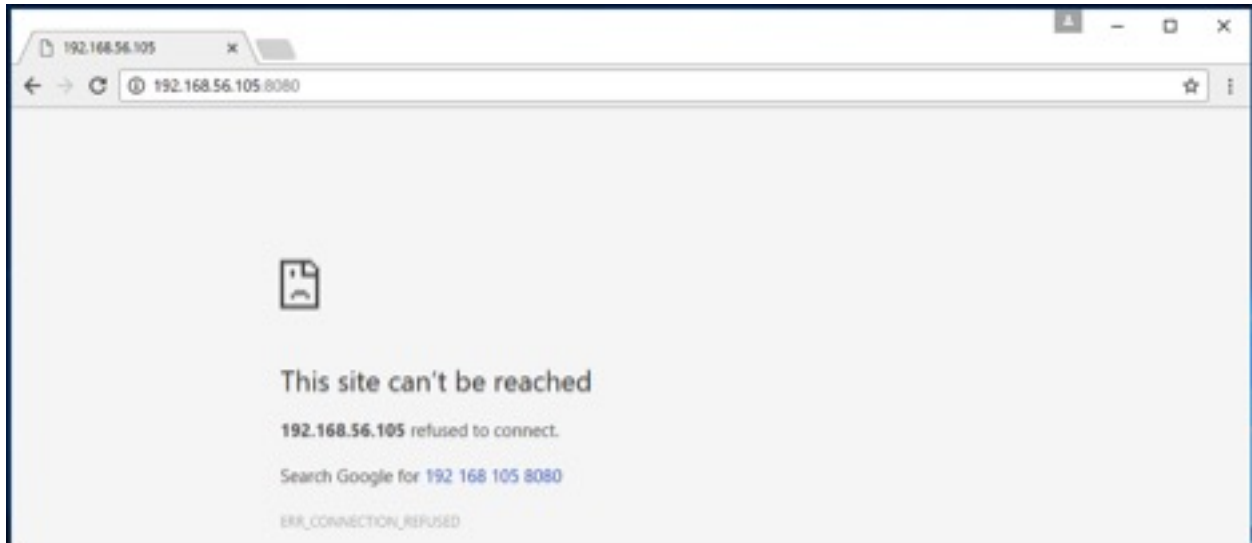
3.4.3 Web Browser connection of Galaxy instance on VM



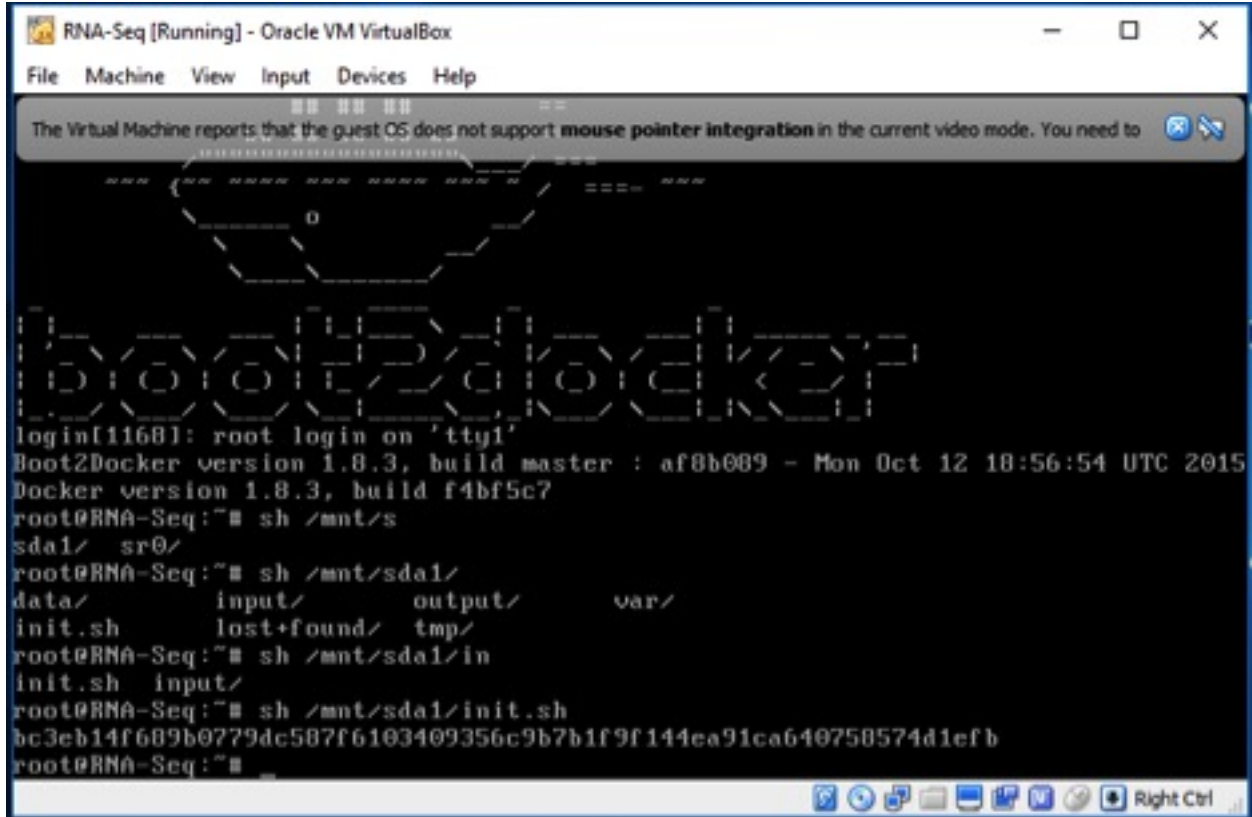
3.5 How to access TED toolkit on VM

3.6 TED VM Troubleshoot

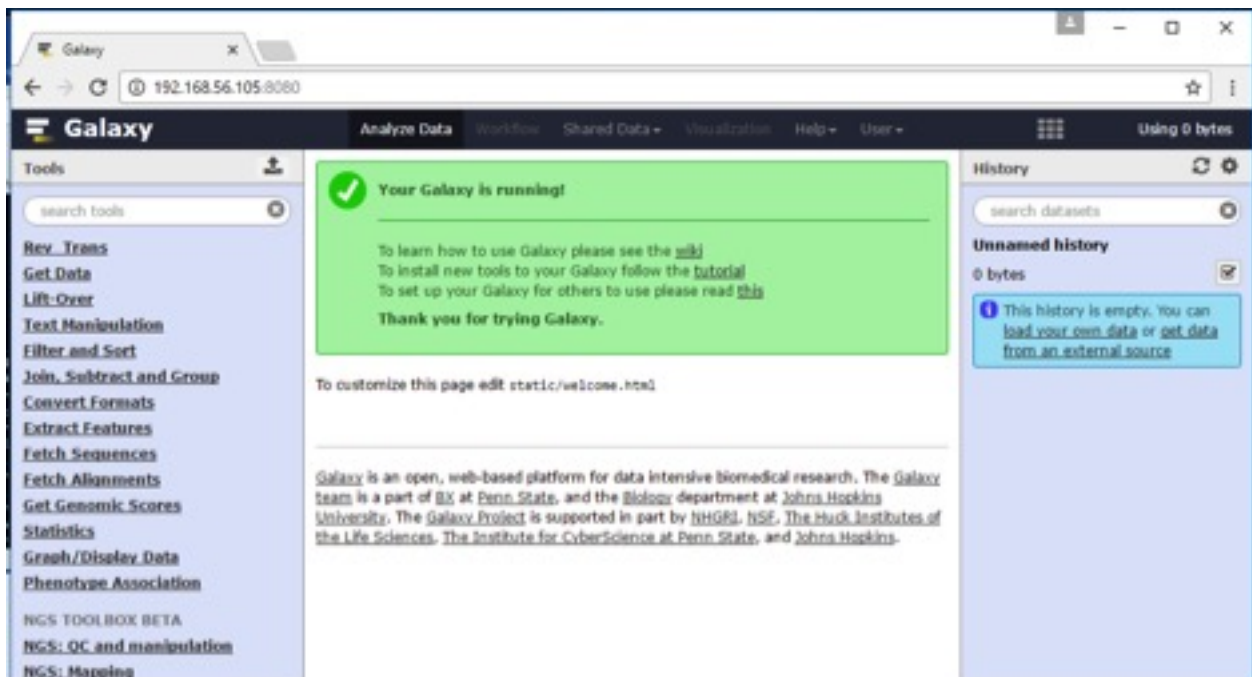
3.6.1 Galaxy instance IP address unreachable



3.6.2 Reinitialize TED appliance



3.6.3 Reconnect Galaxy instance IP address on web browser



The MIT License (MIT)

Copyright (c) 2017 BCIL

Permission is hereby granted, free of charge, to any person obtaining a copy of this software and associated documentation files (the “Software”), to deal in the Software without restriction, including without limitation the rights to use, copy, modify, merge, publish, distribute, sublicense, and/or sell copies of the Software, and to permit persons to whom the Software is furnished to do so, subject to the following conditions:

The above copyright notice and this permission notice shall be included in all copies or substantial portions of the Software.

THE SOFTWARE IS PROVIDED “AS IS”, WITHOUT WARRANTY OF ANY KIND, EXPRESS OR IMPLIED, INCLUDING BUT NOT LIMITED TO THE WARRANTIES OF MERCHANTABILITY, FITNESS FOR A PARTICULAR PURPOSE AND NONINFRINGEMENT. IN NO EVENT SHALL THE AUTHORS OR COPYRIGHT HOLDERS BE LIABLE FOR ANY CLAIM, DAMAGES OR OTHER LIABILITY, WHETHER IN AN ACTION OF CONTRACT, TORT OR OTHERWISE, ARISING FROM, OUT OF OR IN CONNECTION WITH THE SOFTWARE OR THE USE OR OTHER DEALINGS IN THE SOFTWARE.

CHAPTER 5

Contact

Any queries, comments, thoughts? Please feel free to contact: 1) thahminaali@gmail.com 2) kk104@hunter.cuny.edu.

- [search](#)