
Riffle

Release 0.1.0

June 26, 2014

1	Installation	3
1.1	Dependencies	3
2	Usage	5
2.1	Icons	8
3	API reference	9
3.1	riffle	9
3.2	riffle.browser	9
3.3	riffle.icon_factory	9
3.4	riffle.model	9
4	Glossary	11
5	Indices and tables	13
6	Copyright & License	15

Filesystem browser for PySide.

Installation

Installing Riffle is simple with `pip`:

```
$ pip install riffle
```

If the Cheeseshop (a.k.a. PyPI) is down, you can also install Riffle from one of the mirrors:

```
$ pip install --use-mirrors riffle
```

Alternatively, you may wish to download manually from Github where Riffle is [actively developed](#).

You can clone the public repository:

```
$ git clone git://github.com/4degrees/riffle.git
```

Or download an appropriate [tarball](#) or [zipball](#)

Once you have a copy of the source, you can install it into your site-packages:

```
$ python setup.py install
```

1.1 Dependencies

- Python `>= 2.6, < 3`
- PySide `>= 1.2.2, < 2`
- Clique `>= 1.2.0, < 2`

1.1.1 Additional For testing

- Pytest `>= 2.3.5`

Usage

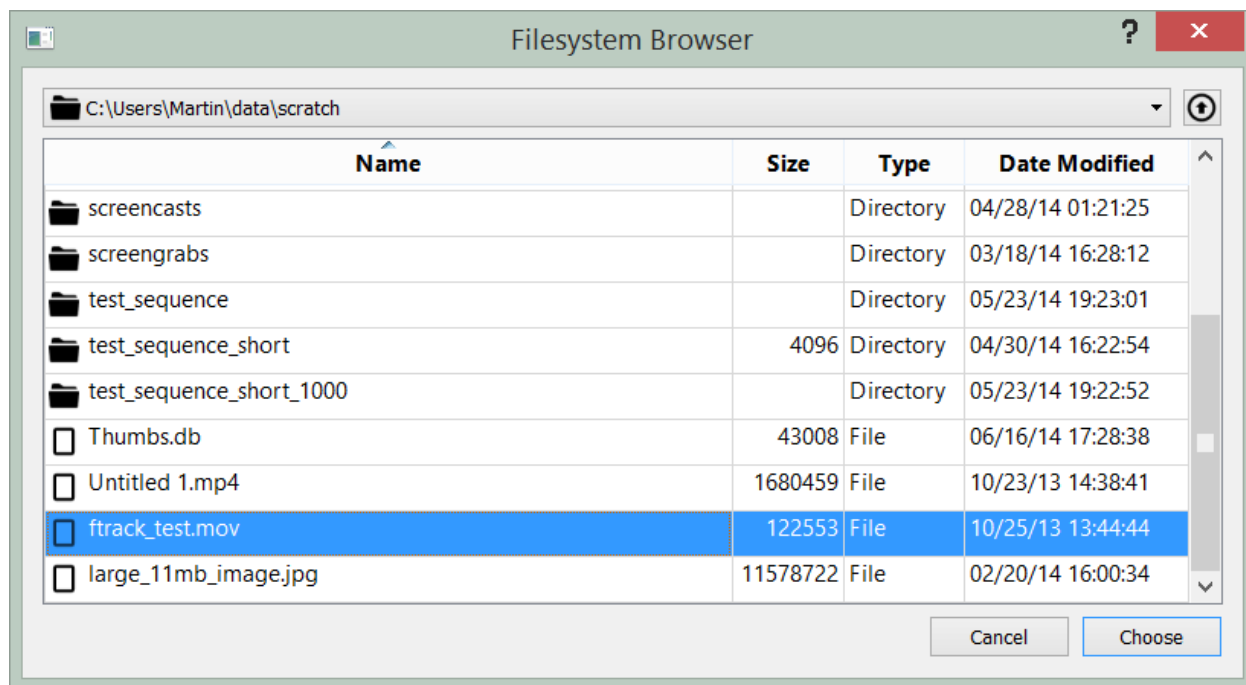
To use the browser, first create an instance of it and configure the size as desired:

```
import riffle.browser

browser = riffle.browser.FileSystemBrowser()
browser.setMinimumSize(800, 400)
```

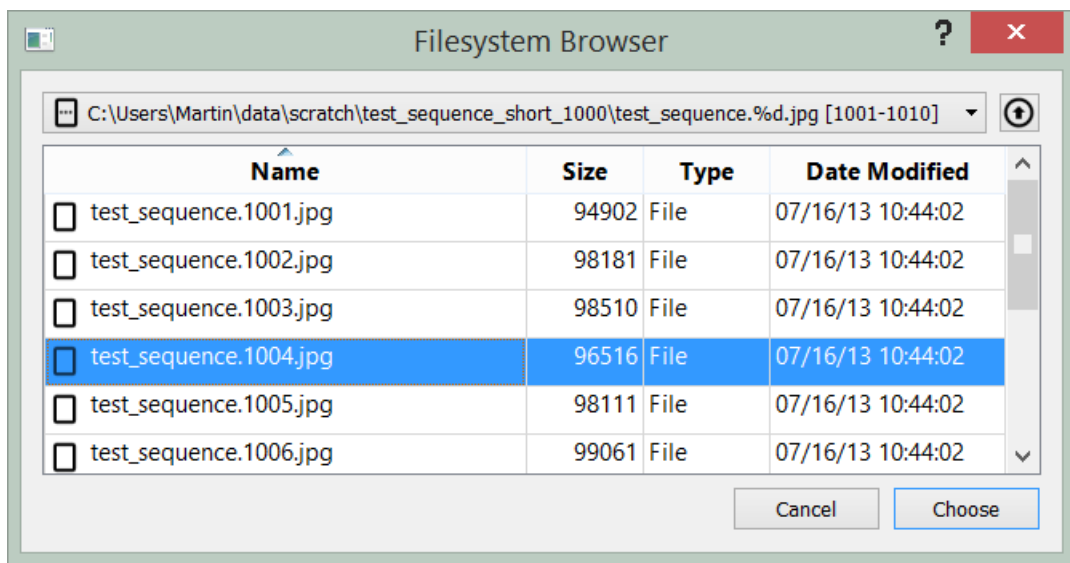
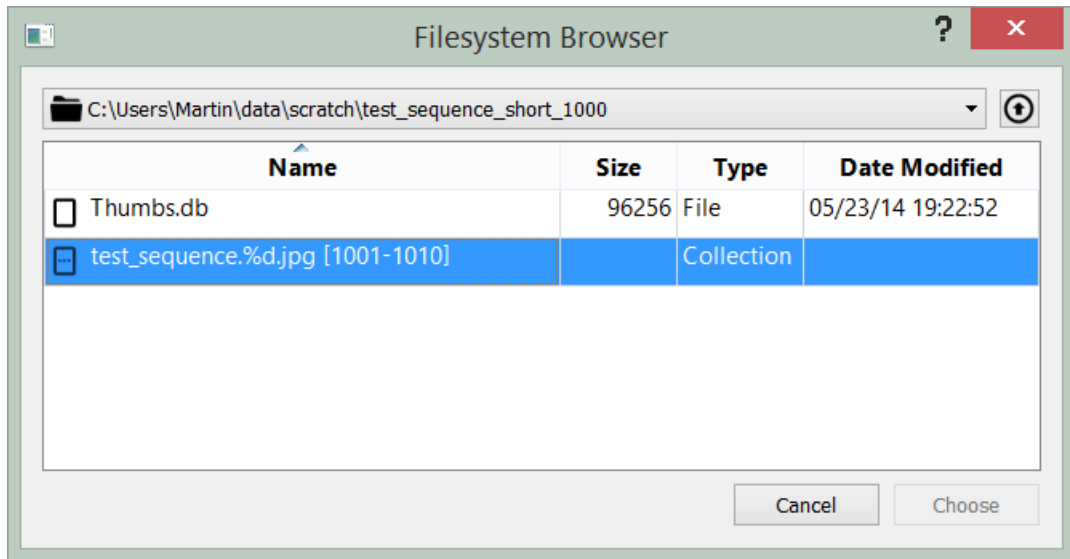
Then open it in blocking mode and retrieve any selected files chosen by the user:

```
if browser.exec_():
    selected = browser.selected()
    print('Selected: {}'.format(selected))
```



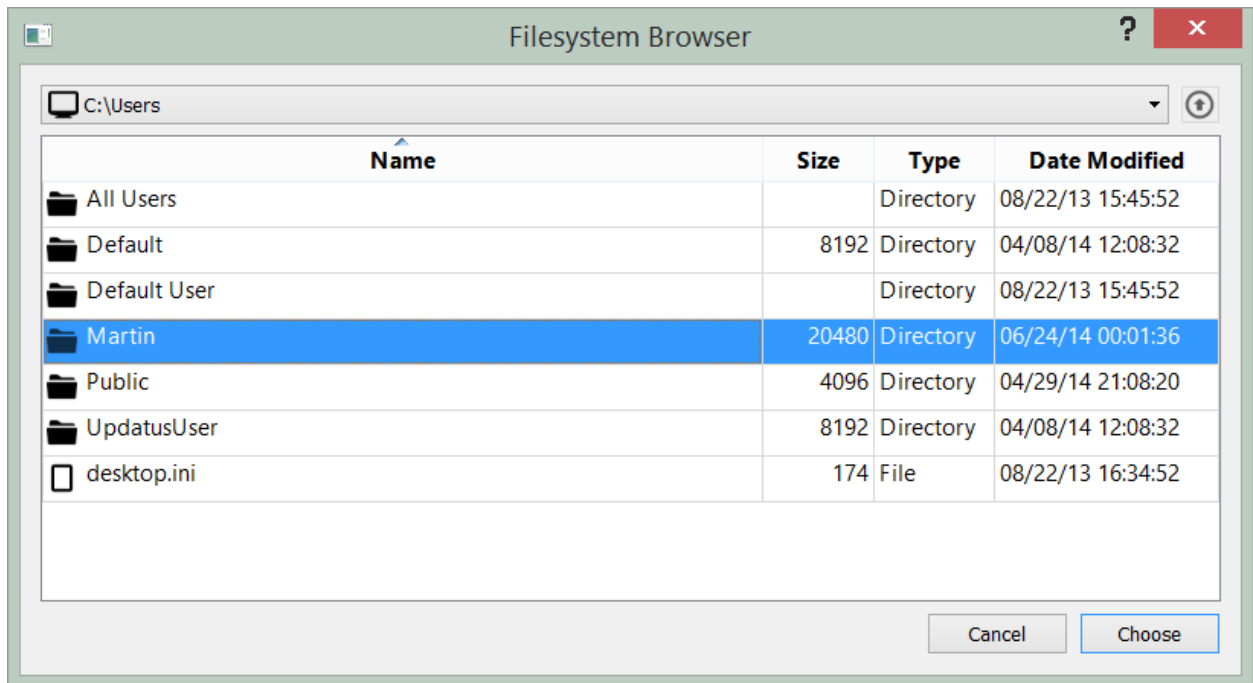
```
Selected: [u'C:\\Users\\Martin\\data\\scratch\\ftrack_test.mov']
```

The browser can also identify sequences of files (using *Clique*). They will be displayed as a special *collection* item and can be navigated into like a directory to see and select individual files.



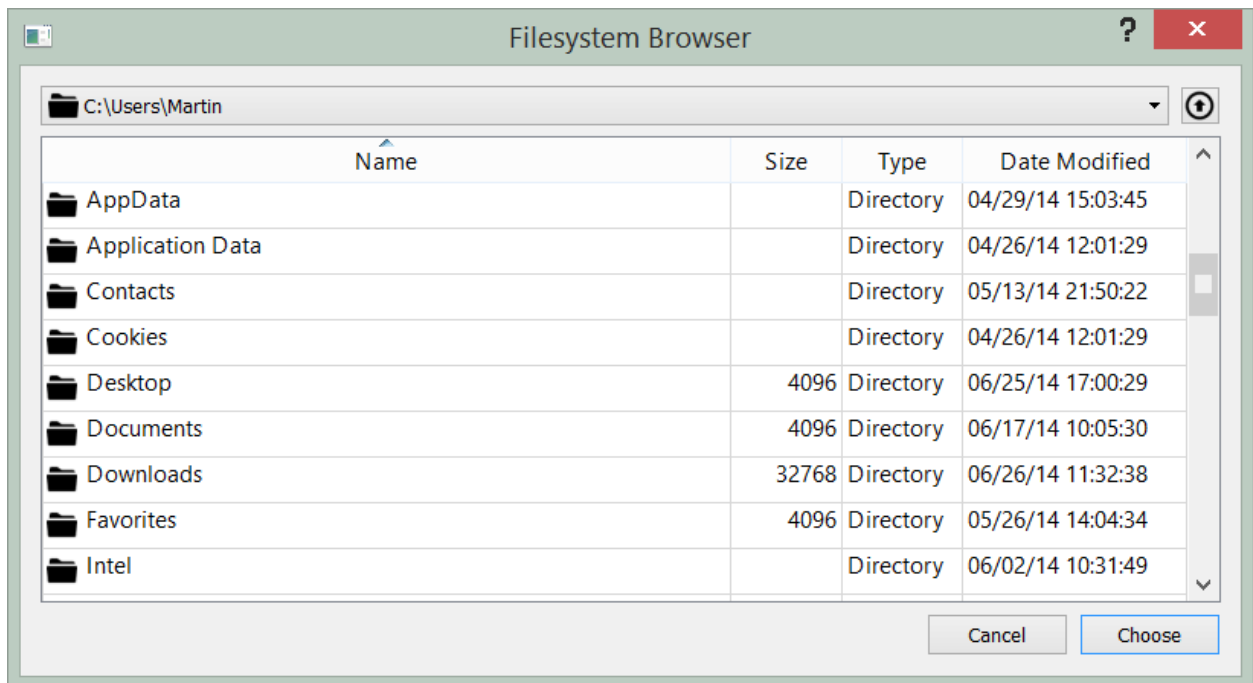
Each browser instance can be configured with a root path. The browser will not be able to navigate above this root path:

```
browser = riffle.browser.FilesystemBrowser('C:\\Users')
browser.show()
```



In addition to a root, a browser also has a location that can be set to change the currently displayed location:

```
browser.setLocation('C:\\Users\\Martin')
```



Note: It is not possible to set a location that is outside the root path tree. An error is raised if attempted.

2.1 Icons

Icons displayed for entries in the browser are provided by an `IconFactory`. You can pass in your own icon factory to the browser to customise the icons used:

```
class AllFilesIconFactory(object):
    '''Force all icons to be file icons.'''

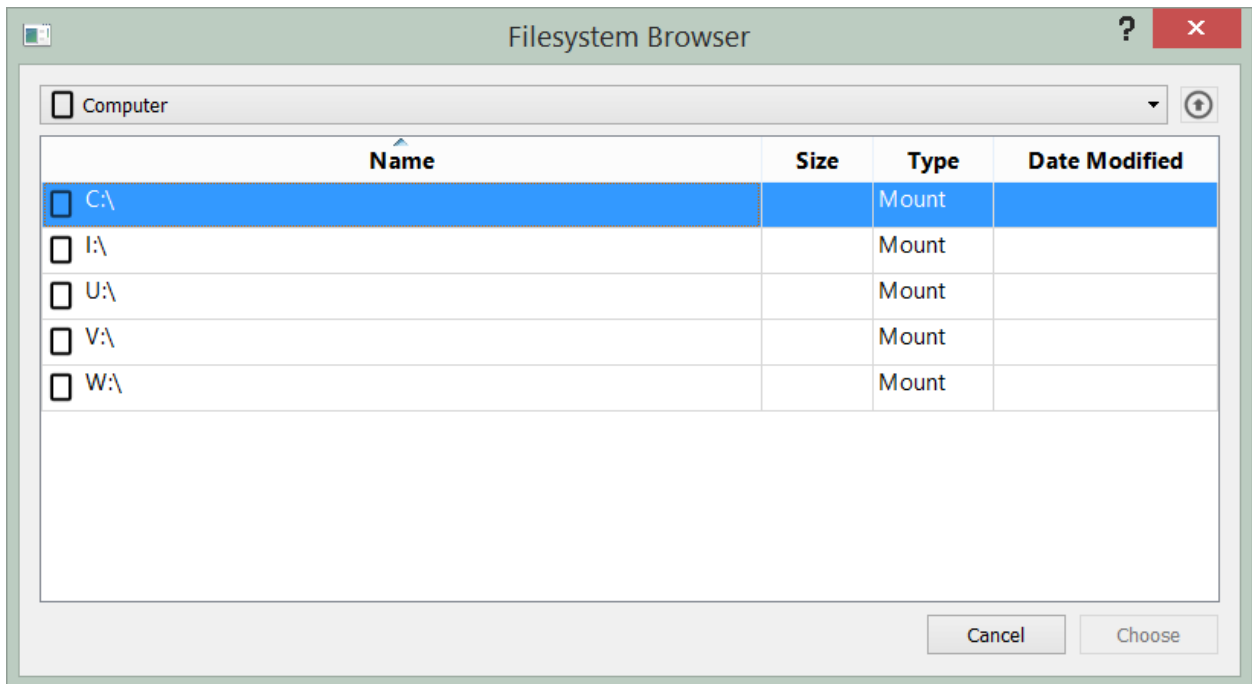
    def icon(self, specification):
        '''Return appropriate icon for *specification*.

        *specification* should be either:

        * An instance of :py:class:`riffle.model.Item`
        * One of the defined icon types (:py:class:`IconType`)

        '''
        return QtGui.QIcon(':riffle/icon/file')

browser = riffle.browser.FilesystemBrowser(
    iconFactory=AllFilesIconFactory()
)
```



API reference

3.1 riffle

3.2 riffle.browser

3.3 riffle.icon_factory

3.4 riffle.model

Indices and tables

- *genindex*
- *modindex*
- *search*

Copyright & License

Copyright (c) 2014 Martin Pengelly-Phillips

Licensed under the Apache License, Version 2.0 (the “License”); you may not use this work except in compliance with the License. You may obtain a copy of the License in the LICENSE.txt file, or at:

<http://www.apache.org/licenses/LICENSE-2.0>

Unless required by applicable law or agreed to in writing, software distributed under the License is distributed on an “AS IS” BASIS, WITHOUT WARRANTIES OR CONDITIONS OF ANY KIND, either express or implied. See the License for the specific language governing permissions and limitations under the License.